

Daily Maintenance Routine

Buzz: Gliss to top note and avoid "slotting" on the way down

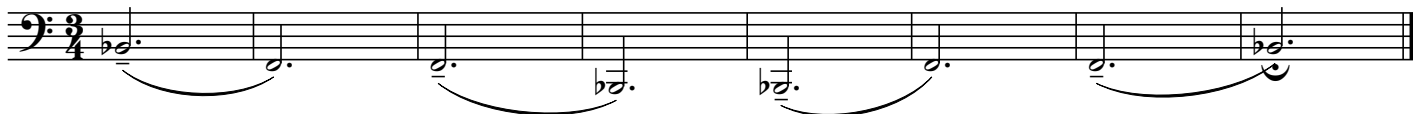


Also buzz a few simple songs (ex. America, Deck the Halls, etc.)
Make sure to always have a pitch reference and to gliss between notes

Slow and even. Without the tongue:



Long Tones with Slurs:



Five staves of musical notation in bass clef. Each staff contains a series of notes connected by slurs, with various dynamic markings such as *pp*, *mf*, and *f* placed below the notes. The notation includes a variety of note values and rests, all connected by slurs.

Dynamic Work-Out: Strive to keep tone color consistent throughout dynamic extremes

Seven staves of musical notation in bass clef, illustrating dynamic work-outs. The notation includes crescendos and decrescendos, with dynamic markings such as *p*, *ff*, *sim.*, *ff*, *pp*, *mp*, *ff*, and *p* placed below the notes. The notes are connected by slurs, and the dynamics are indicated by wedge-shaped markings.

Schlossberg:

Musical score for Schlossberg exercise in bass clef, 3/4 time. The piece consists of seven staves of music. The first staff begins with a dynamic marking of *mf*, followed by a crescendo to *pp*, then a return to *mf* and another crescendo to *pp*. The second staff continues with *mf* and *pp* markings. The third staff starts with *p* and crescendos to *ff*, with a *sim.* marking. The fourth staff features *mf* and *pp* markings. The fifth staff has a *sim.* marking. The sixth and seventh staves continue the melodic line with various dynamics.

Clarke Study - a la Vining:

Musical score for Clarke Study - a la Vining in bass clef, common time. The exercise consists of two staves. The first staff starts with a dynamic marking of *f*, followed by a *p* marking, and then a series of *f* and *p* markings. The second staff continues with *f* and *p* markings. The text "Transpose Every Day" is written at the end of the second staff.

Remington - Tonguing on a Line: Use Various Articulations Every Day

Musical score for Remington exercise in bass clef, common time. The exercise consists of a single staff of music featuring a continuous eighth-note pattern across the entire staff.

Continue down chromatically to:

Musical score showing a chromatic scale in bass clef, common time. The scale descends from a higher note to a lower note, with the instruction "Continue down chromatically to:" above it.

and even lower!

Edwards: Overtone Series Accuracy

Continue down chromatically

Musical notation for Edwards: Overtone Series Accuracy. The piece is in bass clef, 2/4 time, and B-flat major. It consists of two measures of eighth-note chords, with a key signature change to D major in the second measure. The notes are: G2, Bb2, D3, F3, Ab3, Bb3, D4, F4, Ab4, Bb4, D5, F5, Ab5, Bb5, D6, F6, Ab6, Bb6, D7, F7, Ab7, Bb7, D8, F8, Ab8, Bb8, D9, F9, Ab9, Bb9, D10, F10, Ab10, Bb10, D11, F11, Ab11, Bb11, D12, F12, Ab12, Bb12, D13, F13, Ab13, Bb13, D14, F14, Ab14, Bb14, D15, F15, Ab15, Bb15, D16, F16, Ab16, Bb16, D17, F17, Ab17, Bb17, D18, F18, Ab18, Bb18, D19, F19, Ab19, Bb19, D20, F20, Ab20, Bb20, D21, F21, Ab21, Bb21, D22, F22, Ab22, Bb22, D23, F23, Ab23, Bb23, D24, F24, Ab24, Bb24, D25, F25, Ab25, Bb25, D26, F26, Ab26, Bb26, D27, F27, Ab27, Bb27, D28, F28, Ab28, Bb28, D29, F29, Ab29, Bb29, D30, F30, Ab30, Bb30, D31, F31, Ab31, Bb31, D32, F32, Ab32, Bb32, D33, F33, Ab33, Bb33, D34, F34, Ab34, Bb34, D35, F35, Ab35, Bb35, D36, F36, Ab36, Bb36, D37, F37, Ab37, Bb37, D38, F38, Ab38, Bb38, D39, F39, Ab39, Bb39, D40, F40, Ab40, Bb40, D41, F41, Ab41, Bb41, D42, F42, Ab42, Bb42, D43, F43, Ab43, Bb43, D44, F44, Ab44, Bb44, D45, F45, Ab45, Bb45, D46, F46, Ab46, Bb46, D47, F47, Ab47, Bb47, D48, F48, Ab48, Bb48, D49, F49, Ab49, Bb49, D50, F50, Ab50, Bb50, D51, F51, Ab51, Bb51, D52, F52, Ab52, Bb52, D53, F53, Ab53, Bb53, D54, F54, Ab54, Bb54, D55, F55, Ab55, Bb55, D56, F56, Ab56, Bb56, D57, F57, Ab57, Bb57, D58, F58, Ab58, Bb58, D59, F59, Ab59, Bb59, D60, F60, Ab60, Bb60, D61, F61, Ab61, Bb61, D62, F62, Ab62, Bb62, D63, F63, Ab63, Bb63, D64, F64, Ab64, Bb64, D65, F65, Ab65, Bb65, D66, F66, Ab66, Bb66, D67, F67, Ab67, Bb67, D68, F68, Ab68, Bb68, D69, F69, Ab69, Bb69, D70, F70, Ab70, Bb70, D71, F71, Ab71, Bb71, D72, F72, Ab72, Bb72, D73, F73, Ab73, Bb73, D74, F74, Ab74, Bb74, D75, F75, Ab75, Bb75, D76, F76, Ab76, Bb76, D77, F77, Ab77, Bb77, D78, F78, Ab78, Bb78, D79, F79, Ab79, Bb79, D80, F80, Ab80, Bb80, D81, F81, Ab81, Bb81, D82, F82, Ab82, Bb82, D83, F83, Ab83, Bb83, D84, F84, Ab84, Bb84, D85, F85, Ab85, Bb85, D86, F86, Ab86, Bb86, D87, F87, Ab87, Bb87, D88, F88, Ab88, Bb88, D89, F89, Ab89, Bb89, D90, F90, Ab90, Bb90, D91, F91, Ab91, Bb91, D92, F92, Ab92, Bb92, D93, F93, Ab93, Bb93, D94, F94, Ab94, Bb94, D95, F95, Ab95, Bb95, D96, F96, Ab96, Bb96, D97, F97, Ab97, Bb97, D98, F98, Ab98, Bb98, D99, F99, Ab99, Bb99, D100, F100, Ab100, Bb100, D101, F101, Ab101, Bb101, D102, F102, Ab102, Bb102, D103, F103, Ab103, Bb103, D104, F104, Ab104, Bb104, D105, F105, Ab105, Bb105, D106, F106, Ab106, Bb106, D107, F107, Ab107, Bb107, D108, F108, Ab108, Bb108, D109, F109, Ab109, Bb109, D110, F110, Ab110, Bb110, D111, F111, Ab111, Bb111, D112, F112, Ab112, Bb112, D113, F113, Ab113, Bb113, D114, F114, Ab114, Bb114, D115, F115, Ab115, Bb115, D116, F116, Ab116, Bb116, D117, F117, Ab117, Bb117, D118, F118, Ab118, Bb118, D119, F119, Ab119, Bb119, D120, F120, Ab120, Bb120, D121, F121, Ab121, Bb121, D122, F122, Ab122, Bb122, D123, F123, Ab123, Bb123, D124, F124, Ab124, Bb124, D125, F125, Ab125, Bb125, D126, F126, Ab126, Bb126, D127, F127, Ab127, Bb127, D128, F128, Ab128, Bb128, D129, F129, Ab129, Bb129, D130, F130, Ab130, Bb130, D131, F131, Ab131, Bb131, D132, F132, Ab132, Bb132, D133, F133, Ab133, Bb133, D134, F134, Ab134, Bb134, D135, F135, Ab135, Bb135, D136, F136, Ab136, Bb136, D137, F137, Ab137, Bb137, D138, F138, Ab138, Bb138, D139, F139, Ab139, Bb139, D140, F140, Ab140, Bb140, D141, F141, Ab141, Bb141, D142, F142, Ab142, Bb142, D143, F143, Ab143, Bb143, D144, F144, Ab144, Bb144, D145, F145, Ab145, Bb145, D146, F146, Ab146, Bb146, D147, F147, Ab147, Bb147, D148, F148, Ab148, Bb148, D149, F149, Ab149, Bb149, D150, F150, Ab150, Bb150, D151, F151, Ab151, Bb151, D152, F152, Ab152, Bb152, D153, F153, Ab153, Bb153, D154, F154, Ab154, Bb154, D155, F155, Ab155, Bb155, D156, F156, Ab156, Bb156, D157, F157, Ab157, Bb157, D158, F158, Ab158, Bb158, D159, F159, Ab159, Bb159, D160, F160, Ab160, Bb160, D161, F161, Ab161, Bb161, D162, F162, Ab162, Bb162, D163, F163, Ab163, Bb163, D164, F164, Ab164, Bb164, D165, F165, Ab165, Bb165, D166, F166, Ab166, Bb166, D167, F167, Ab167, Bb167, D168, F168, Ab168, Bb168, D169, F169, Ab169, Bb169, D170, F170, Ab170, Bb170, D171, F171, Ab171, Bb171, D172, F172, Ab172, Bb172, D173, F173, Ab173, Bb173, D174, F174, Ab174, Bb174, D175, F175, Ab175, Bb175, D176, F176, Ab176, Bb176, D177, F177, Ab177, Bb177, D178, F178, Ab178, Bb178, D179, F179, Ab179, Bb179, D180, F180, Ab180, Bb180, D181, F181, Ab181, Bb181, D182, F182, Ab182, Bb182, D183, F183, Ab183, Bb183, D184, F184, Ab184, Bb184, D185, F185, Ab185, Bb185, D186, F186, Ab186, Bb186, D187, F187, Ab187, Bb187, D188, F188, Ab188, Bb188, D189, F189, Ab189, Bb189, D190, F190, Ab190, Bb190, D191, F191, Ab191, Bb191, D192, F192, Ab192, Bb192, D193, F193, Ab193, Bb193, D194, F194, Ab194, Bb194, D195, F195, Ab195, Bb195, D196, F196, Ab196, Bb196, D197, F197, Ab197, Bb197, D198, F198, Ab198, Bb198, D199, F199, Ab199, Bb199, D200, F200, Ab200, Bb200, D201, F201, Ab201, Bb201, D202, F202, Ab202, Bb202, D203, F203, Ab203, Bb203, D204, F204, Ab204, Bb204, D205, F205, Ab205, Bb205, D206, F206, Ab206, Bb206, D207, F207, Ab207, Bb207, D208, F208, Ab208, Bb208, D209, F209, Ab209, Bb209, D210, F210, Ab210, Bb210, D211, F211, Ab211, Bb211, D212, F212, Ab212, Bb212, D213, F213, Ab213, Bb213, D214, F214, Ab214, Bb214, D215, F215, Ab215, Bb215, D216, F216, Ab216, Bb216, D217, F217, Ab217, Bb217, D218, F218, Ab218, Bb218, D219, F219, Ab219, Bb219, D220, F220, Ab220, Bb220, D221, F221, Ab221, Bb221, D222, F222, Ab222, Bb222, D223, F223, Ab223, Bb223, D224, F224, Ab224, Bb224, D225, F225, Ab225, Bb225, D226, F226, Ab226, Bb226, D227, F227, Ab227, Bb227, D228, F228, Ab228, Bb228, D229, F229, Ab229, Bb229, D230, F230, Ab230, Bb230, D231, F231, Ab231, Bb231, D232, F232, Ab232, Bb232, D233, F233, Ab233, Bb233, D234, F234, Ab234, Bb234, D235, F235, Ab235, Bb235, D236, F236, Ab236, Bb236, D237, F237, Ab237, Bb237, D238, F238, Ab238, Bb238, D239, F239, Ab239, Bb239, D240, F240, Ab240, Bb240, D241, F241, Ab241, Bb241, D242, F242, Ab242, Bb242, D243, F243, Ab243, Bb243, D244, F244, Ab244, Bb244, D245, F245, Ab245, Bb245, D246, F246, Ab246, Bb246, D247, F247, Ab247, Bb247, D248, F248, Ab248, Bb248, D249, F249, Ab249, Bb249, D250, F250, Ab250, Bb250, D251, F251, Ab251, Bb251, D252, F252, Ab252, Bb252, D253, F253, Ab253, Bb253, D254, F254, Ab254, Bb254, D255, F255, Ab255, Bb255, D256, F256, Ab256, Bb256, D257, F257, Ab257, Bb257, D258, F258, Ab258, Bb258, D259, F259, Ab259, Bb259, D260, F260, Ab260, Bb260, D261, F261, Ab261, Bb261, D262, F262, Ab262, Bb262, D263, F263, Ab263, Bb263, D264, F264, Ab264, Bb264, D265, F265, Ab265, Bb265, D266, F266, Ab266, Bb266, D267, F267, Ab267, Bb267, D268, F268, Ab268, Bb268, D269, F269, Ab269, Bb269, D270, F270, Ab270, Bb270, D271, F271, Ab271, Bb271, D272, F272, Ab272, Bb272, D273, F273, Ab273, Bb273, D274, F274, Ab274, Bb274, D275, F275, Ab275, Bb275, D276, F276, Ab276, Bb276, D277, F277, Ab277, Bb277, D278, F278, Ab278, Bb278, D279, F279, Ab279, Bb279, D280, F280, Ab280, Bb280, D281, F281, Ab281, Bb281, D282, F282, Ab282, Bb282, D283, F283, Ab283, Bb283, D284, F284, Ab284, Bb284, D285, F285, Ab285, Bb285, D286, F286, Ab286, Bb286, D287, F287, Ab287, Bb287, D288, F288, Ab288, Bb288, D289, F289, Ab289, Bb289, D290, F290, Ab290, Bb290, D291, F291, Ab291, Bb291, D292, F292, Ab292, Bb292, D293, F293, Ab293, Bb293, D294, F294, Ab294, Bb294, D295, F295, Ab295, Bb295, D296, F296, Ab296, Bb296, D297, F297, Ab297, Bb297, D298, F298, Ab298, Bb298, D299, F299, Ab299, Bb299, D300, F300, Ab300, Bb300, D301, F301, Ab301, Bb301, D302, F302, Ab302, Bb302, D303, F303, Ab303, Bb303, D304, F304, Ab304, Bb304, D305, F305, Ab305, Bb305, D306, F306, Ab306, Bb306, D307, F307, Ab307, Bb307, D308, F308, Ab308, Bb308, D309, F309, Ab309, Bb309, D310, F310, Ab310, Bb310, D311, F311, Ab311, Bb311, D312, F312, Ab312, Bb312, D313, F313, Ab313, Bb313, D314, F314, Ab314, Bb314, D315, F315, Ab315, Bb315, D316, F316, Ab316, Bb316, D317, F317, Ab317, Bb317, D318, F318, Ab318, Bb318, D319, F319, Ab319, Bb319, D320, F320, Ab320, Bb320, D321, F321, Ab321, Bb321, D322, F322, Ab322, Bb322, D323, F323, Ab323, Bb323, D324, F324, Ab324, Bb324, D325, F325, Ab325, Bb325, D326, F326, Ab326, Bb326, D327, F327, Ab327, Bb327, D328, F328, Ab328, Bb328, D329, F329, Ab329, Bb329, D330, F330, Ab330, Bb330, D331, F331, Ab331, Bb331, D332, F332, Ab332, Bb332, D333, F333, Ab333, Bb333, D334, F334, Ab334, Bb334, D335, F335, Ab335, Bb335, D336, F336, Ab336, Bb336, D337, F337, Ab337, Bb337, D338, F338, Ab338, Bb338, D339, F339, Ab339, Bb339, D340, F340, Ab340, Bb340, D341, F341, Ab341, Bb341, D342, F342, Ab342, Bb342, D343, F343, Ab343, Bb343, D344, F344, Ab344, Bb344, D345, F345, Ab345, Bb345, D346, F346, Ab346, Bb346, D347, F347, Ab347, Bb347, D348, F348, Ab348, Bb348, D349, F349, Ab349, Bb349, D350, F350, Ab350, Bb350, D351, F351, Ab351, Bb351, D352, F352, Ab352, Bb352, D353, F353, Ab353, Bb353, D354, F354, Ab354, Bb354, D355, F355, Ab355, Bb355, D356, F356, Ab356, Bb356, D357, F357, Ab357, Bb357, D358, F358, Ab358, Bb358, D359, F359, Ab359, Bb359, D360, F360, Ab360, Bb360, D361, F361, Ab361, Bb361, D362, F362, Ab362, Bb362, D363, F363, Ab363, Bb363, D364, F364, Ab364, Bb364, D365, F365, Ab365, Bb365, D366, F366, Ab366, Bb366, D367, F367, Ab367, Bb367, D368, F368, Ab368, Bb368, D369, F369, Ab369, Bb369, D370, F370, Ab370, Bb370, D371, F371, Ab371, Bb371, D372, F372, Ab372, Bb372, D373, F373, Ab373, Bb373, D374, F374, Ab374, Bb374, D375, F375, Ab375, Bb375, D376, F376, Ab376, Bb376, D377, F377, Ab377, Bb377, D378, F378, Ab378, Bb378, D379, F379, Ab379, Bb379, D380, F380, Ab380, Bb380, D381, F381, Ab381, Bb381, D382, F382, Ab382, Bb382, D383, F383, Ab383, Bb383, D384, F384, Ab384, Bb384, D385, F385, Ab385, Bb385, D386, F386, Ab386, Bb386, D387, F387, Ab387, Bb387, D388, F388, Ab388, Bb388, D389, F389, Ab389, Bb389, D390, F390, Ab390, Bb390, D391, F391, Ab391, Bb391, D392, F392, Ab392, Bb392, D393, F393, Ab393, Bb393, D394, F394, Ab394, Bb394, D395, F395, Ab395, Bb395, D396, F396, Ab396, Bb396, D397, F397, Ab397, Bb397, D398, F398, Ab398, Bb398, D399, F399, Ab399, Bb399, D400, F400, Ab400, Bb400, D401, F401, Ab401, Bb401, D402, F402, Ab402, Bb402, D403, F403, Ab403, Bb403, D404, F404, Ab404, Bb404, D405, F405, Ab405, Bb405, D406, F406, Ab406, Bb406, D407, F407, Ab407, Bb407, D408, F408, Ab408, Bb408, D409, F409, Ab409, Bb409, D410, F410, Ab410, Bb410, D411, F411, Ab411, Bb411, D412, F412, Ab412, Bb412, D413, F413, Ab413, Bb413, D414, F414, Ab414, Bb414, D415, F415, Ab415, Bb415, D416, F416, Ab416, Bb416, D417, F417, Ab417, Bb417, D418, F418, Ab418, Bb418, D419, F419, Ab419, Bb419, D420, F420, Ab420, Bb420, D421, F421, Ab421, Bb421, D422, F422, Ab422, Bb422, D423, F423, Ab423, Bb423, D424, F424, Ab424, Bb424, D425, F425, Ab425, Bb425, D426, F426, Ab426, Bb426, D427, F427, Ab427, Bb427, D428, F428, Ab428, Bb428, D429, F429, Ab429, Bb429, D430, F430, Ab430, Bb430, D431, F431, Ab431, Bb431, D432, F432, Ab432, Bb432, D433, F433, Ab433, Bb433, D434, F434, Ab434, Bb434, D435, F435, Ab435, Bb435, D436, F436, Ab436, Bb436, D437, F437, Ab437, Bb437, D438, F438, Ab438, Bb438, D439, F439, Ab439, Bb439, D440, F440, Ab440, Bb440, D441, F441, Ab441, Bb441, D442, F442, Ab442, Bb442, D443, F443, Ab443, Bb443, D444, F444, Ab444, Bb444, D445, F445, Ab445, Bb445, D446, F446, Ab446, Bb446, D447, F447, Ab447, Bb447, D448, F448, Ab448, Bb448, D449, F449, Ab449, Bb449, D450, F450, Ab450, Bb450, D451, F451, Ab451, Bb451, D452, F452, Ab452, Bb452, D453, F453, Ab453, Bb453, D454, F454, Ab454, Bb454, D455, F455, Ab455, Bb455, D456, F456, Ab456, Bb456, D457, F457, Ab457, Bb457, D458, F458, Ab458, Bb458, D459, F459, Ab459, Bb459, D460, F460, Ab460, Bb460, D461, F461, Ab461, Bb461, D462, F462, Ab462, Bb462, D463, F463, Ab463, Bb463, D464, F464, Ab464, Bb464, D465, F465, Ab465, Bb465, D466, F466, Ab466, Bb466, D467, F467, Ab467, Bb467, D468, F468, Ab468, Bb468, D469, F469, Ab469, Bb469, D470, F470, Ab470, Bb470, D471, F471, Ab471, Bb471, D472, F472, Ab472, Bb472, D473, F473, Ab473, Bb473, D474, F474, Ab474, Bb474, D475, F475, Ab475, Bb475, D476, F476, Ab476, Bb476, D477, F477, Ab477, Bb477, D478, F478, Ab478, Bb478, D479, F479, Ab479, Bb479, D480, F480, Ab480, Bb480, D481, F481, Ab481, Bb481, D482, F482, Ab482, Bb482, D483, F483, Ab483, Bb483, D484, F484, Ab484, Bb484, D485, F485, Ab485, Bb485, D486, F486, Ab486, Bb486, D487, F487, Ab487, Bb487, D488, F488, Ab488, Bb488, D489, F489, Ab489, Bb489, D490, F490, Ab490, Bb490, D491, F491, Ab491, Bb491, D492, F492, Ab492, Bb492, D493, F493, Ab493, Bb493, D494, F494, Ab494, Bb494, D495, F495, Ab495, Bb495, D496, F496, Ab496, Bb496, D497, F497, Ab497, Bb497, D498, F498, Ab498, Bb498, D499, F499, Ab499, Bb499, D500, F500, Ab500, Bb500, D501, F501, Ab501, Bb501, D502, F502, Ab502, Bb502, D503, F503, Ab503, Bb503, D504, F504, Ab504, Bb504, D505, F505, Ab505, Bb505, D506, F506, Ab506, Bb506, D507, F507, Ab507, Bb507, D508, F508, Ab508, Bb508, D509, F509, Ab509, Bb509, D510, F510, Ab510, Bb510, D511, F511, Ab511, Bb511, D512, F512, Ab512, Bb512, D513, F513, Ab513, Bb513, D514, F514, Ab514, Bb514, D515, F515, Ab515, Bb515, D516, F516, Ab516, Bb516, D517, F517, Ab517, Bb517, D518, F518, Ab518, Bb518, D519, F519, Ab519, Bb519, D520, F520, Ab520, Bb520, D521, F521, Ab521, Bb521, D522, F522, Ab522, Bb522, D523, F523, Ab523, Bb523, D524, F524, Ab524, Bb524, D525, F525, Ab525, Bb525, D526, F526, Ab526, Bb526, D527, F527, Ab527, Bb527, D528, F528, Ab528, Bb528, D529, F529, Ab529, Bb529, D530, F530, Ab530, Bb530, D531, F531, Ab531, Bb531, D532, F532, Ab532, Bb532, D533, F533, Ab533, Bb533, D534, F534, Ab534, Bb534, D535, F535, Ab535, Bb535, D536, F536, Ab536, Bb536, D537, F537, Ab537, Bb537, D538, F538, Ab538, Bb538, D539, F539, Ab539, Bb539, D540, F540, Ab540, Bb540, D541, F541, Ab541, Bb541, D542, F542, Ab542, Bb542, D543, F543, Ab543, Bb543, D544, F544, Ab544, Bb544, D545, F545, Ab545, Bb545, D546, F546, Ab546, Bb546, D547, F547, Ab547, Bb547, D548, F548, Ab548, Bb548, D549, F549, Ab549, Bb549, D550, F550, Ab550, Bb550, D551, F551, Ab551, Bb551, D552, F552, Ab552, Bb552, D553, F553, Ab553, Bb553, D554, F554, Ab554, Bb554, D555, F555, Ab555, Bb555, D556, F556, Ab556, Bb556, D557, F557, Ab557, Bb557, D558, F558, Ab558, Bb558, D559, F559, Ab559, Bb559, D560, F560, Ab560, Bb560, D561, F561, Ab561, Bb561, D562, F562, Ab562, Bb562, D563, F563, Ab563, Bb563, D564, F564, Ab564, Bb564, D565, F565, Ab565, Bb565, D566, F566, Ab566, Bb566, D567, F567, Ab567, Bb567, D568, F568, Ab568, Bb568, D569, F569, Ab569, Bb569, D570, F570, Ab570, Bb570, D571, F571, Ab571, Bb571, D572, F572, Ab572, Bb572, D573, F573, Ab573, Bb573, D574, F574, Ab574, Bb574, D575, F575, Ab575, Bb575, D576, F576, Ab576, Bb576, D577, F577, Ab577, Bb577, D578, F578, Ab578, Bb578, D579, F579, Ab579, Bb579, D580, F580, Ab580, Bb580, D581, F581, Ab581, Bb581, D582, F582, Ab582, Bb582, D583, F583, Ab583, Bb583, D584, F584, Ab584, Bb584, D585, F585, Ab585, Bb585, D586, F586, Ab586, Bb586, D587, F587, Ab587, Bb587, D588, F588, Ab588, Bb588, D589, F589, Ab589, Bb589, D590, F590, Ab590, Bb590, D591, F591, Ab591, Bb591, D592, F592, Ab592, Bb592, D593, F593, Ab593, Bb593, D594, F594, Ab594, Bb594, D595, F595, Ab595, Bb595, D596, F596, Ab596, Bb596, D597, F597, Ab597, Bb597, D598, F598, Ab598, Bb598, D599, F599, Ab599, Bb599, D600, F600, Ab600, Bb600, D601, F601, Ab601, Bb

3 >>> 3

3

Continue down Chromatically

Ellefson: IV-I Disease - Concentrate on Valve Coordination

A.

B. C. D. E. F. G. H.

Arban's: Intervals - Evenness of tone. Avoid "ghosting" or "splatting" the lower tone

Transpose to all major keys

Lip Slurs -Rhythmic Progression

3 3 3 3 3 3

sim. sim.

Continue down and up chromatically.
Concentrate on evenness of tone.
Focus on the moment immediately before the pitch changes, maintaining consistent volume

Blokker: Maintain Rhythmic Integrity along with a smooth, consistent tone

3 3 3 3 3 3

3 3 3

3 3 3 3 3 3

3 3 3 3

Continue up and down chromatically
Also work different partials

Continue up and down chromatically
Also work different partials

Sprott: Flip-Flops

Musical notation for Sprott: Flip-Flops, bass clef, showing a sequence of notes with slurs and ties.

Continue up and down chromatically
Also begin on different partials

Colin:

Musical notation for Colin, bass clef, showing a sequence of notes with a slur.

No Tongue -
Continue down chromatically

Marstellar:

Musical notation for Marstellar, bass clef, 3/4 time signature, featuring triplets and a 'sim.' marking.

Continue down chromatically

Musical notation for Marstellar, bass clef, 3/4 time signature, featuring triplets.

Continue down chromatically

Musical notation for Marstellar, bass clef, 3/4 time signature, featuring triplets.

Continue down chromatically

Remington:

Musical notation for Remington, bass clef, common time signature, showing a sequence of notes with slurs.

Continue down chromatically

Remington a la Alessi:

Musical notation for Remington a la Alessi, bass clef, showing a sequence of notes with slurs.

Continue down chromatically

Lange: Range Building - Each phrase in one breath. Take breaks as needed.

Musical notation for Lange: Range Building, bass clef, 3/4 time signature, showing a sequence of notes with slurs.

Musical notation for Lange: Range Building, bass clef, 3/4 time signature, showing a sequence of notes with slurs.

Musical notation for Lange: Range Building, bass clef, 3/4 time signature, showing a sequence of notes with slurs.

Continue up chromatically
Go at least one series past your comfort level

Ostrander: Valve Coordination -Play both tongued and slurred

Continue down chromatically

First musical staff in bass clef with a common time signature. It contains three measures of music, each with a repeat sign. The first measure has a slurred eighth-note pattern, the second has a dotted quarter note, and the third has a slurred eighth-note pattern. The key signature has one flat.

Continue down chromatically

Second musical staff in bass clef with a common time signature. It contains three measures of music, each with a repeat sign. The first measure has a slurred eighth-note pattern, the second has a dotted quarter note, and the third has a slurred eighth-note pattern. The key signature has two flats.

Continue down chromatically

Third musical staff in bass clef with a common time signature. It contains three measures of music, each with a repeat sign. The first measure has a slurred eighth-note pattern, the second has a dotted quarter note, and the third has a slurred eighth-note pattern. The key signature has three flats.

Continue down chromatically

Fourth musical staff in bass clef with a common time signature. It contains three measures of music, each with a repeat sign. The first measure has a slurred eighth-note pattern, the second has a dotted quarter note, and the third has a slurred eighth-note pattern. The key signature has four flats.

Cool Down: Slow and without tongue

Fifth musical staff in bass clef with a common time signature. It contains three measures of music, each with a repeat sign. The first measure has a slurred eighth-note pattern, the second has a dotted quarter note, and the third has a slurred eighth-note pattern. The key signature has one sharp. The dynamic marking *p* is present under each measure.

Sixth musical staff in bass clef with a common time signature. It contains three measures of music, each with a repeat sign. The first measure has a slurred eighth-note pattern, the second has a dotted quarter note, and the third has a slurred eighth-note pattern. The key signature has two sharps. The dynamic marking *p* is present under each measure.

Seventh musical staff in bass clef with a common time signature. It contains two measures of music, each with a repeat sign. The first measure has a slurred eighth-note pattern, and the second has a dotted quarter note. The key signature has three sharps. The dynamic marking *p* is present under each measure.